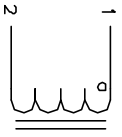


The information contained in this drawing is the sole property of CWS Coil Winding Specialist. Any reproduction in part or whole without written permission of CWS Coil Winding Specialist is prohibited.

REVISION HISTORY

REV	ECN	DESCRIPTION	SIGN & DATE			
			BY	DATE	CHK	DATE
C		PRODUCTION RELEASE	BJN	1/17/07	JLJU	1/17/07



SCHEMATIC

USING A PERMANENT MARKING METHOD

6 MARK PART NUMBER AND REVISION, IF APPLICABLE
IF NEEDED, WRAP INDUCTOR WITH GLASS OR MYLAR TAPE

TO THE CORE

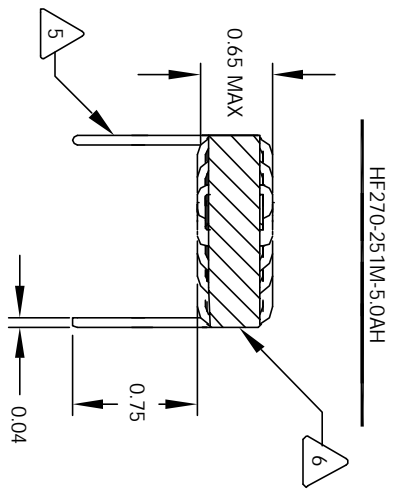
5 MUST REST FLAT ON PCB. LEADS MUST BE TANGENT
FLUSH WITH THE COIL EDGE. AS SHOWN (I.E. COIL
REMOVE INSULATION AND TIN LEADS 0.75 INCH

4 WIND COILS EVENLY SPACED AROUND THE CORE
CONSTRUCTION:

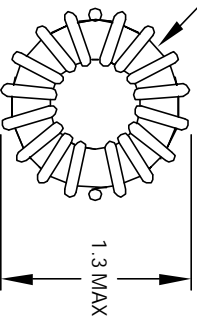
3 HI-POT TEST FOR WINDING TO CORE ISOLATION = 500VDC MIN
CURRENT RATING : 5 AMPS, 40 °C TEMP. RISE, NO AIR FLOW
DCR = 60.0 MILLI-OHMS MAX.
DC BIASED = 5.0 AMPS, INDUCTANCE = 210 UH
DC BIASED = 6.8 AMPS, INDUCTANCE = 200 UH
INDUCTANCE = 250 UH +- .10% @ LOW DC BIAS, 1 KHz, 250mV
SPECIFICATIONS:

2 WIRE: UL RECOGNIZED 200°C RATED MAGNET WIRE
CWS BYTEMARK OR OTHER APPROVED PART
CORE: COATED HIGH FLUX TOROIDAL CORE

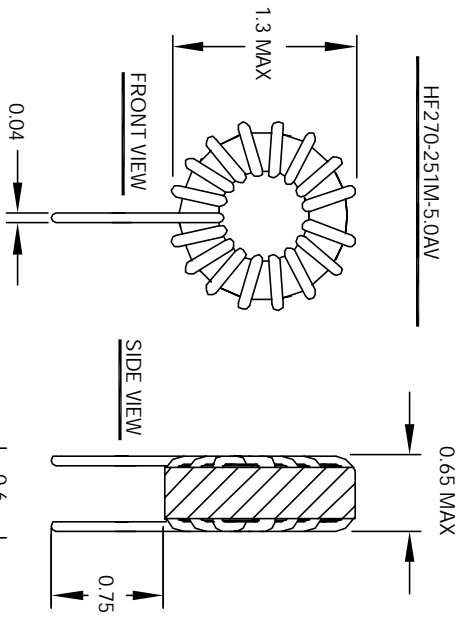
1 RATING CLASS B (130°C MIN.) REQUIRED
MATERIAL: UL RECOGNIZED 94V-0 FOR FLAMMABILITY
NOTES: TOROIDAL POWER CHOKER. ALL DIMENSIONS IN INCHES



FRONT VIEW

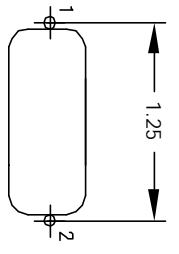


BOTTOM VIEW

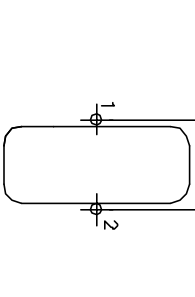


FRONT VIEW

SIDE VIEW



MOUNTING HOLES PATTERN



MOUNTING HOLES PATTERN

UNLESS OTHERWISE SPECIFIED	
DIMENSIONING AND TOLERANCE PER ANSI Y14.5M	ALL DIMENSIONS ARE IN INCHES AND (UNLESS STATED)
TOLERANCE INCHES: .XX = ±.005 .XY = ±.015 .XXX = ±.127 .XX = ±.25	ANGLE PROJECTION
DO NOT SCALE DRAWINGS	

CODE IDENT	MFG. P/N	DESCRIPTION	ITEM NO.
AUTOCAD SOLIDWORKS SIGN	X	COWS COM, INC www.cowls.com	
DATE	DATE	CWS Coil Winding Specialist. 353 WEST GROVE ORANGE, CA 92665	
DRAWN EBJN	1/17/07	TITLE	
DESIGN JLJU	1/17/07	Toroidal Power Chokes	
ENGR. KSUM	1/17/07	Toroid Inductor	
APPR. JLJU	1/17/07	SIZE DIM. IN.	
		B	
		HF-270-251M-5.0A	REV C
		SCALE 2=1	SHEET 1 OF 1